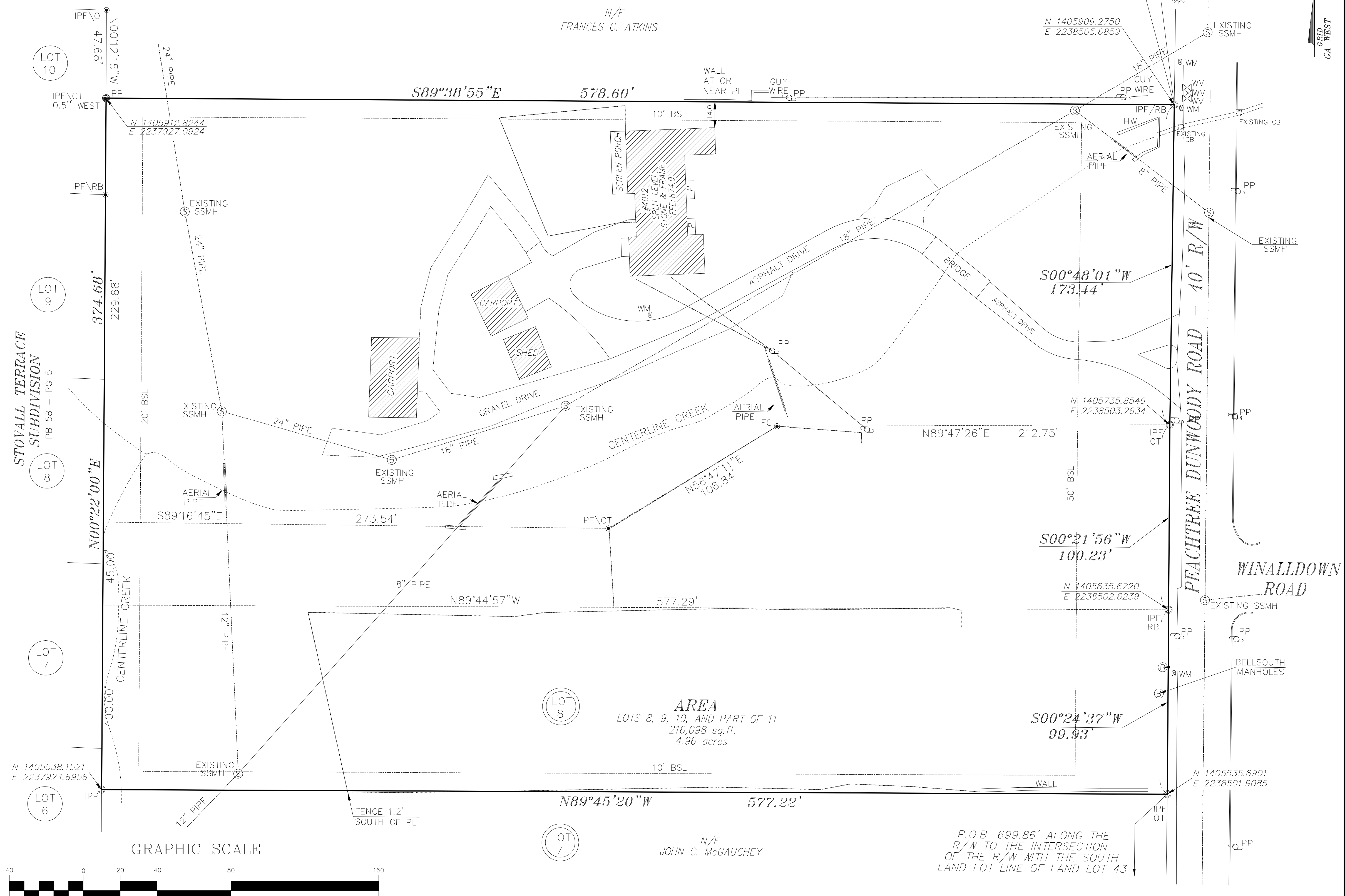


**LEGEND**

IPF	IRON PIN FOUND	CMF	CONCRETE MONUMENT FOUND
OT	OPEN TOP PIN	OHUL	OVERHEAD UTILITY LINE(S)
CT	CRIMP TOP PIN	SMH	SEWER MAN HOLE
RB	REINFORCING BAR	MHT	MAN HOLE TELEPHONE
CL	CENTERLINE	CB	CATCH BASIN
R/W	RIGHT-OF-WAY	JB	JUNCTION BOX
LL	LAND LOT	HW	HEAD WALL
CONC	CONCRETE	CMP	CORRUGATED METAL PIPE
CO	CLEAN OUT	RCP	REINFORCED CONCRETE PIPE
PP	POWER POLE	SSE	SANITARY SEWER EASEMENT
CY	GAS VALVE	DE	DRAINAGE EASEMENT
CM	GAS METER	FH	FIRE HYDRANT
LP	LIGHT POLE	WV	WATER VALVE
SS	SANITARY SEWER	WM	WATER METER
FC	FENCE CORNER	POB	POINT OF BEGINNING
M-X-X-	FENCE	D	DEED
M	MEASURED PLAT	IPP	IRON PIN PLACED (1/2" REBAR)



**SOLAR LAND SURVEYING COMPANY**  
 P.O. BOX 723993 ATLANTA, GEORGIA 31139-0993  
 TELEPHONE (770) 794-9055 / FAX (770) 794-9052

DATE 4/5/07  
 SCALE 1" = 40'  
 FULTON COUNTY, GEORGIA

**THE CONSERVATION FUND**  
 SECTION 17 DISTRICT  
 UNIT 11 BLOCK  
 SUBDIVISION E.C. LESTER & S.E. SMITH PROPERTY

ABOVE THE GROUND SURVEY PREPARED FOR:  
 DRAFTED: E.C. LESTER & S.E. SMITH PROPERTY  
 SURVEYED: DISC #:  
 PLOTTED:  
 APPROVED:

DATE: 4/5/07		BY: DATE:	
SCALE: 1" = 40'		REVISION:	
LAND LOT 43	SECTION 17 DISTRICT	UNIT 11 BLOCK	DATE:
LOT 8, 9, 10 & PART OF 11	SECTION 17 DISTRICT	UNIT 11 BLOCK	DATE:
SUBDIVISION E.C. LESTER & S.E. SMITH PROPERTY	SECTION 17 DISTRICT	UNIT 11 BLOCK	DATE:
SURVEYED: E.C. LESTER & S.E. SMITH PROPERTY	SECTION 17 DISTRICT	UNIT 11 BLOCK	DATE:
PLOTTED:	SECTION 17 DISTRICT	UNIT 11 BLOCK	DATE:
APPROVED:	SECTION 17 DISTRICT	UNIT 11 BLOCK	DATE:

JOB # 07-2097

PLAT BOOK 4 PAGE 114  
 DEED BOOK PAGE

"THE ORIGINAL OF THIS DOCUMENT WAS SEALED AND SIGNED BY JOHN W. STANZILIS, JR. G.R.L.S. #2109 AND THIS REPRODUCTION IS NOT A CERTIFIED DOCUMENT."